

System Manual

Ebony I Series Towers

Euro Diamond Series

8.2 MHz Mono Tower



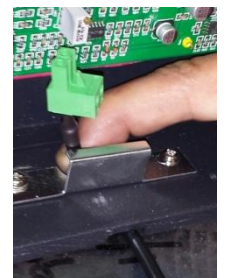
Mono Towers

Congratulations on your purchase of a stop shoplifting security system. We are sure this system will give you peace of mind in regards to shoplifting losses. Please do not hesitate to contact technical support to help guide you through your initial setup (see tech telephone number on side of tower 812-877-9442). Today's technology makes it easy to set up these security towers. They are amazingly simple yet have complex up to date electronics built inside.

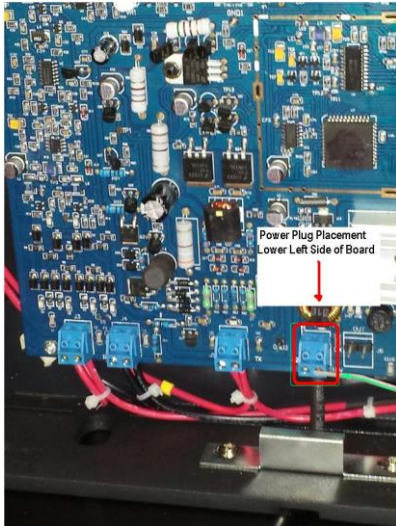
1. Open all boxes and be sure to locate the tower(s), the power supply (Usually one per tower unless you are wiring them with one power supply and an interconnecting wire between the towers), and baseplate(s) (if ordered). Use the keys attached to the tower to remove the side cover(s). Note the tower(s) will be placed so that the removable side covers face each other if more than one tower ordered.



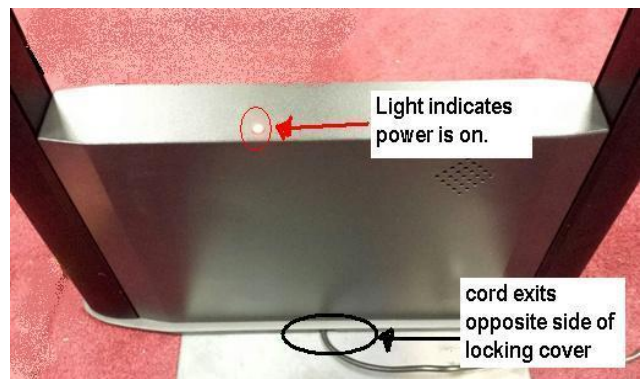
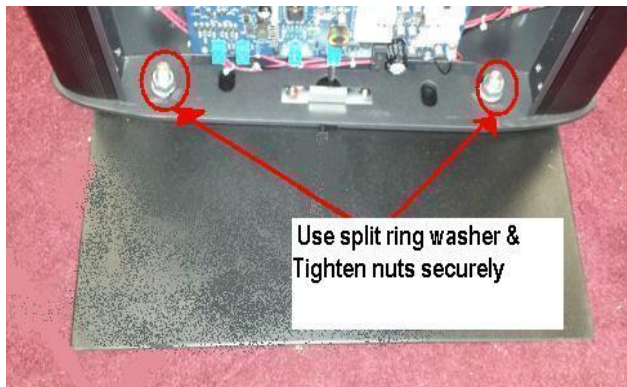
2. It is IMPORTANT to note that the side cover on the Euro Diamond Series is removed by removing the small screws on either side of the plexi-glass tower cover at the bottom. The one to remove is the one with the Sensortags logo attached to it. If you accidentally remove the wrong tower side cover you will not see the electronics board (green).



3. Place the wire for the power supply up through the middle hole of the base of the tower. Attach the plug into the connector marked "P" for power on the electronics board.



4. Remove the bolts and washers from the baseplate. Center the tower and set it in place on the baseplate. Be careful to put the wire through the groove on the bottom of the tower so you do not pinch the wire. **Be sure the wire is going out toward where you will plug the power into (usually the opposite side as the removable side covers).** Place the washers and the nuts back into place and tighten.



5. Now you are ready to plug in your towers. The Ebony I series has a light at the top of the base (on the Euro model it is on the front cover) to let you know that power is “on”. This is so you do not have to take the side cover off to determine if the board is getting power.

It is best that you have a dedicated circuit because the towers will feel the electrical noise from all other items plugged into the same circuit breaker. If this is not possible after attempting to run it on a circuit breaker without many other things, if persistent false alarming still occurs please

contact tech support to help you tune down the sensitivity of the unit. If that is not sufficient then a line filter may help enough so that you do not have to have a dedicated circuit run. Technical support can also help you with line filter recommendations.

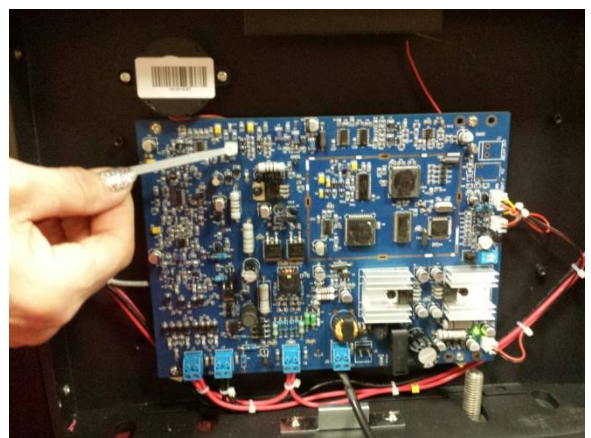
6. Once plugged into an outlet, be sure to let the system warm up at least 15 minutes or so unless constantly false alarming. If continual false alarms occur contact tech support for assistance.

7. Towers can be placed parallel to each other with the locked side covers facing each other. This way it will be easy to see what is going on with the lights on the tower panels while tuning it. The towers can be placed at a distance measured from middle of tower to middle of tower, 3 feet to 6 feet. The detection is affected by the size and type of tag as well as the orientation of the tag as it approaches the tower(s).

8. Clear away any tagged items or heavy metal items or any looped wires at least 3 ft away from both sides of the unit. Power supply cords should be stretched out so that the power supplies sit at least 3 ft away from the towers.

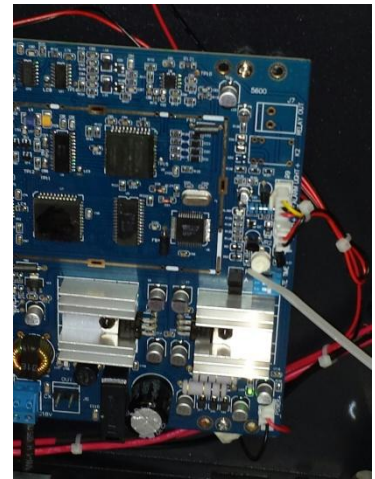
9. If there are any neon lights it is best to keep them 12 ft away from the towers. Some open signs look neon but are really florescent. You will see the small tubes of light and a small box that generates the power for them if it is real neon. You can also sometimes hear it hum if close to it.

10. There is a white plastic **sensitivity adjustment** located upper left on the electronics board. Turning this screw in very small amounts **to the right increases sensitivity and to the left (counterclockwise) makes the machine less sensitive**. Only adjust as if a clock, one number at a time then retest system. There is another white plastic knob that adjusts the volume center right side of the electronics. Again clockwise is louder and



counter clockwise (left) is less loud. Call for tech support if you have any doubts or questions.

11. Once you are satisfied with the performance of your towers, place the side covers back onto the system and lock them into place. Keep the key(s) in an easy place to find later such as keychain of owner or manager or in the cash register drawer.



Warranty

Your tower(s) are under a 2 year parts warranty. If any failure of the electronics occurs due to a manufacturing defect, the part will be replaced at no charge to the customer. Installation of such part is responsibility of the customer. Many of our parts are plug and play for your convenience. Tech Support by phone is offered with the purchase of this product for a length of 5 years.

Sensortags Inc, 5660 Roberts Rd, Terre Haute, IN 47805

800-934-7080 Sales, 812-877-9442 Tech support